

DELIVERING YOUR MESSAGE

## PBC10/TCOAX - PBC10TCX/EN

Open-back wallmount Loudspeakers

### MAIN PROPERTIES

Rated power, Watts: 10

Tappings 100 volt line, Watts: 10/5/2.5/1.25

Transformer Impedance, Ohms, 100V: 1k/2k/4k/8k

Tappings 70.7 volt line, Watts: 5/2.5/1.25/0.625

Driver impedance, Ohms: 8

Effective frequency range, Hz (BSEN60268-5): 80 – 20,000

S.P.L. @ 1m, 1 watt, dB, Test Signal Bandwidth 100Hz-10kHz: 89

S.P.L. @ Full power Octave Bandwidth, dB: 99

Acoustic Power (dB-PWL@1 watt) 1k/2kHz, dB: 88/84

Dispersion at 1k/2k Hz, Degrees: 180/120

Directivity Axial Q factor, 1k/2kHz: 3.7/5.9

Dimensions, front & depth, mm: 330 x 240 x 90

Net weight, Kgs: 1.4

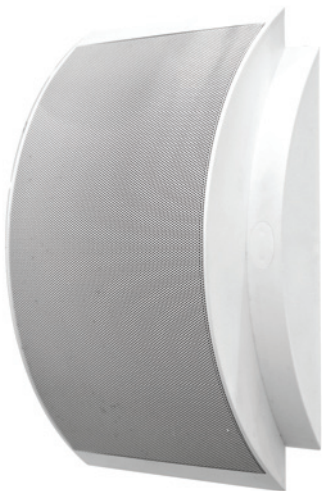
Colour/Finish: White

Material ABS Moulding with UV inhibitors,

Steel mesh

Mounting Keyhole and/or screws

PBC10TCX/EN is BS5839 Part 8 Voice Alarm compliant



[www.ateis-europe.com](http://www.ateis-europe.com)

ATEIS Europe BV - Sydneystraat 42 - 3047BP ROTTERDAM - NETHERLANDS

Phone +31 (0)10 2088690 - Fax +31 (0)10 2088699

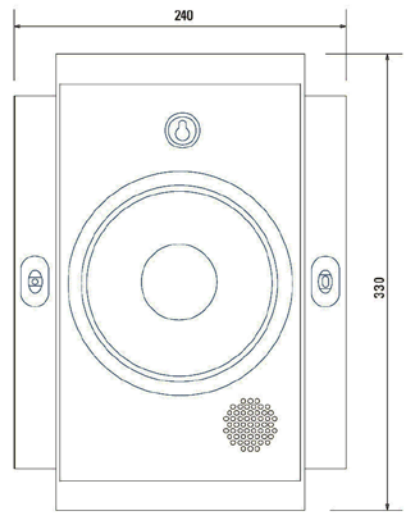


DELIVERING YOUR MESSAGE

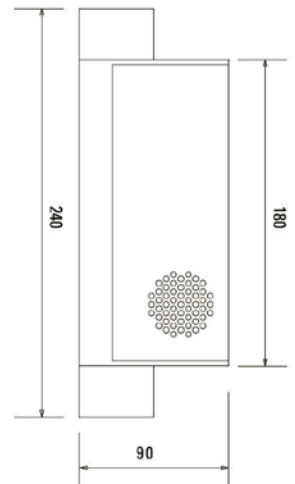
## PBC10/TCOAX - PBC10TCX/EN

Open-back wallmount Loudspeakers

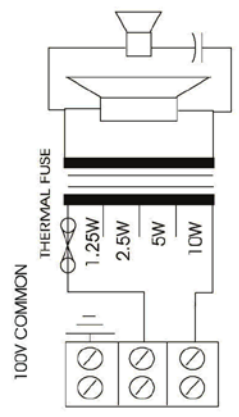
front view  
unit: mm



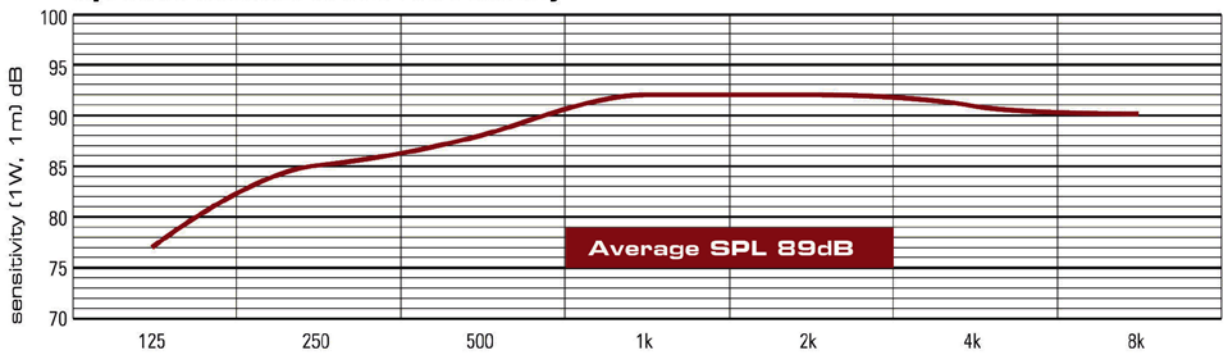
top view  
unit: mm



circuit diagram  
PBC10TCX/EN



speech octave band sensitivity



Effective Frequency Range

Frequency Hz  
 PBC10/TCOAX  
 PBC10TCX/EN

80Hz - 20,000Hz